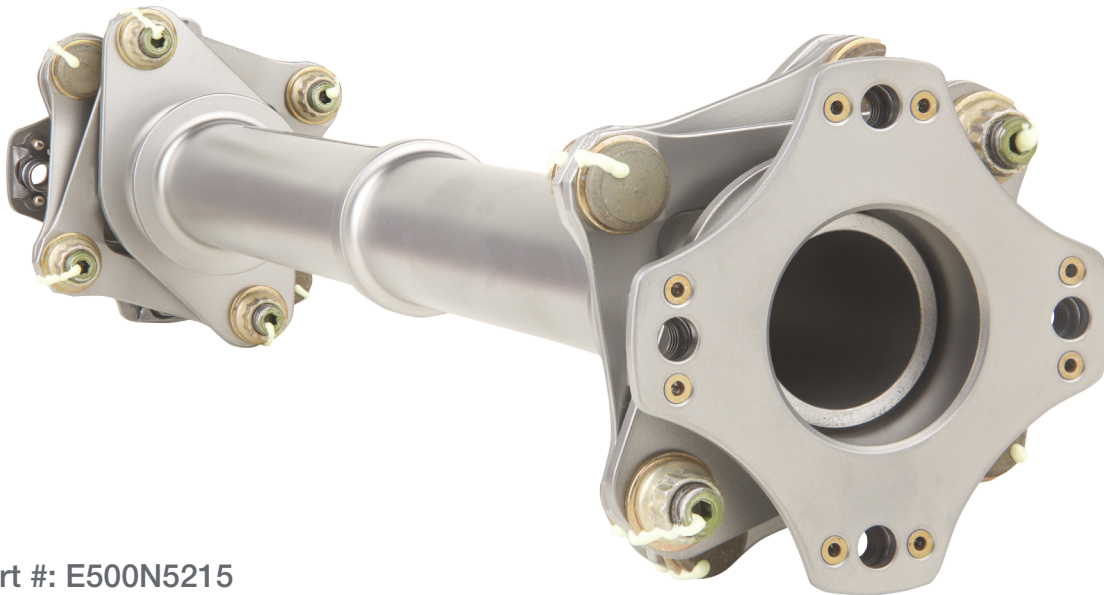


# EXTEX



## FAA Certified Main Driveshaft For The MD500 Series



Part #: E500N5215

EXTEX Engineered Products now holds FAA PMA approval on the MD500 Main Driveshaft. For information on price and availability, contact EXTEX at (480) 632-1039.

**Reduced Pricing Available With Exchange**

[www.extengineered.com](http://www.extengineered.com)

**KAMAN**  
Specialty Bearings &  
Engineered Products

EXTEX Engineered Products designs and supplies high-precision, aftermarket aerospace replacement parts for engines, helicopters, and fixed-wing aircraft.

## Bell 204, 205, 212, 412

### RR250

### MD500

### PT6

### T53

### APU

EXTEX Engineered Products  
340 E. Germann Road, Suite 113  
Gilbert, Arizona 85297 USA  
+1 (480) 632-1039  
[www.extexengineered.com](http://www.extexengineered.com)